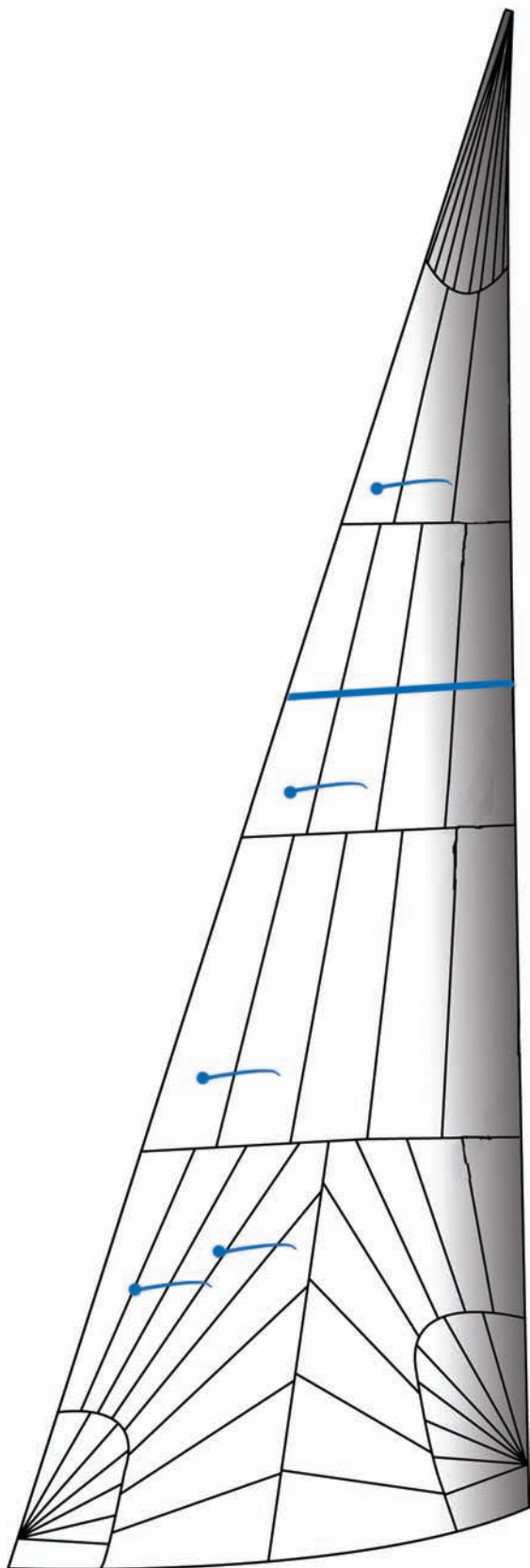




# WESTAWAY

SAILS

## TRI-RADIAL STAYSAIL



### AVAILABLE MATERIALS



**POLYESTER -  
PERFORMANCE CRUISE**  
Dimension DC



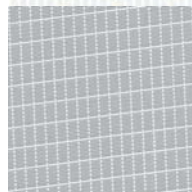
**POLYESTER -  
PERFORMANCE CRUISE**  
Bainbridge CL



**PENTEX - HIGH  
PERFORMANCE CRUISE**  
Dimension DCP



**PENTEX - HIGH  
PERFORMANCE CRUISE**  
Bainbridge CL LSP



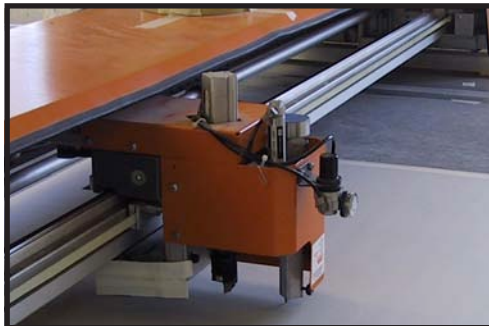
**BLUE WATER CRUISING**  
Dimension Hydra Net



# WESTAWAY

SAILS

## TRI-RADIAL STAYSAIL



Panels in-house computer designed and cut.



Option of brass piston hanks.



Option of lightweight UV protective strips on leech & foot.



Anti-chafe 3-step stitched seams.



Leech line with cleat at clew.



High quality Rutgeron pressed in rings.

Laminate Sails with a Radial panel construction offer superior shape retention compared to any woven product. The panels are aligned radiating from the corners in the anticipated load angles, with careful fabric selection and weight sail distortion can be minimized. Laminates are available for Cruising boats with highly durable double sided woven taffetas in Polyester, lower stretch Pentex and Ultra low stretch Carbon. Radial sails allow lighter fabric to be used in the low load areas like the luff and heavier fabrics to be used at the high load areas like the clew and head. We may use up to different fabric weights in one sail. This ensures the lightest and best performance for a given style of fabric. Cross cut laminates do not offer the long term shape retention that a radial panelled sail delivers, whilst the new style of 'membrane' sails offer excellent performance but their long term durability is poor. UV protective sacrificial strips can be fitted to the leech and foot.