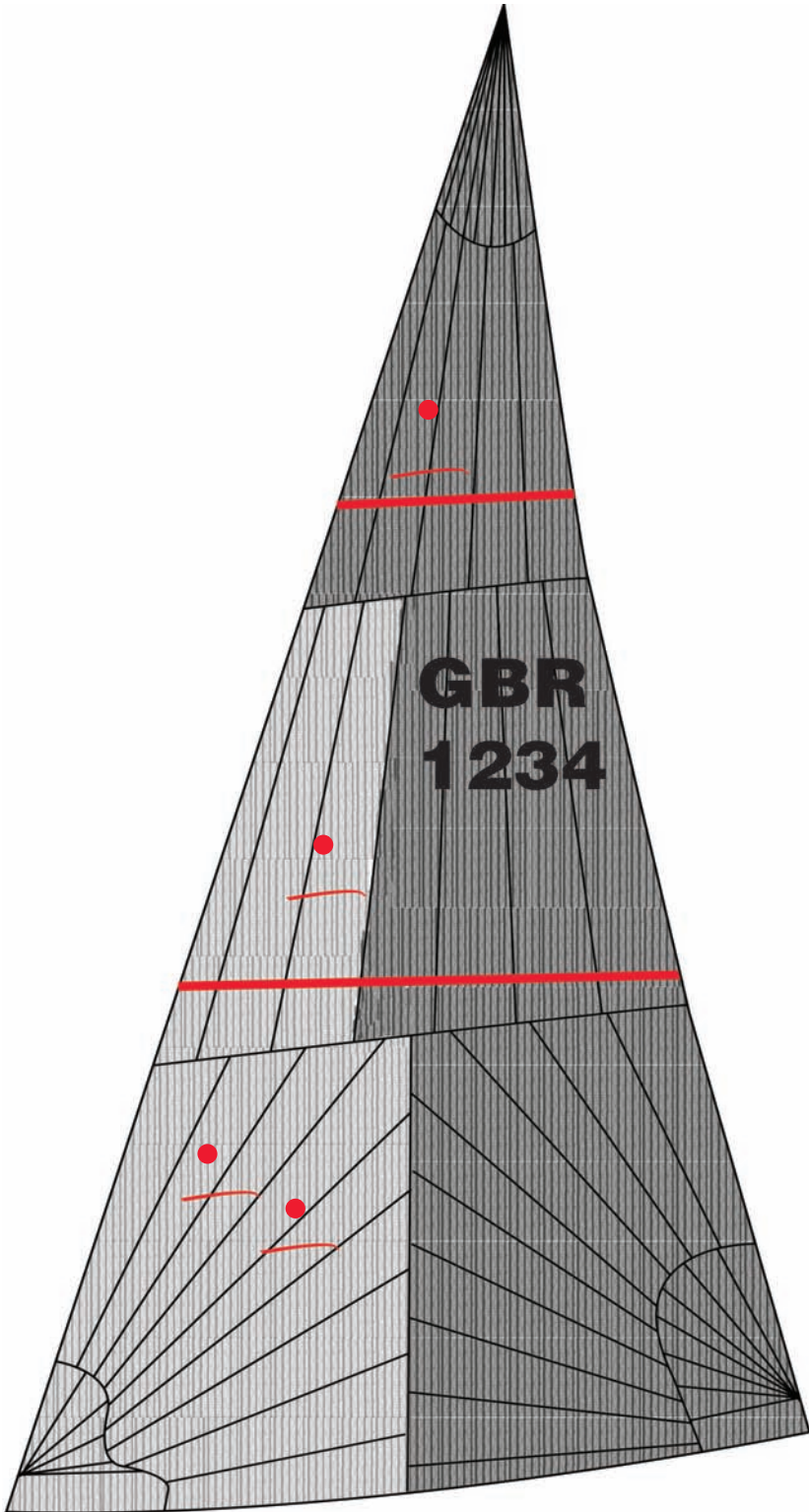




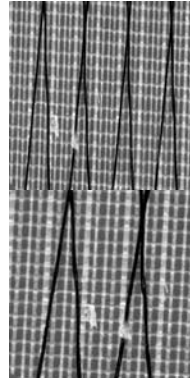
WESTAWAY

SAILS

TRI-RADIAL RACING GENOA

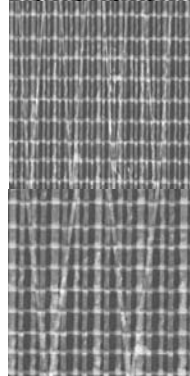


AVAILABLE MATERIALS



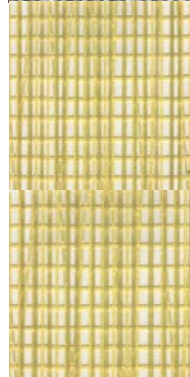
MYLAR CLUB RACE

Dimension PX Polyester laminate



MYLAR CLUB RACE

Dimension PX Polyester laminate
C/W single sided Polyester woven
taffeta



PENTEX ONE DESIGN RACE

Dimension PE



PENTEX CLUB RACE

Dimension PET C/W single sided
Polyester woven taffeta



KEVLAR PERFORMANCE RACE

Dimension X-Tech

KEVLAR OFFSHORE RACE

Dimension X-Tech C/W single
or double sided Polyester woven
taffeta for added durability

CARBON HIGH PERFORMANCE RACE

Dimension GPL

CARBON OFFSHORE RACE

Dimension GPL C/W single or
double sided Polyester woven
taffeta for added durability





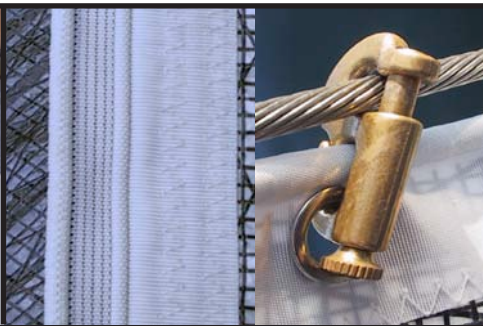
WESTAWAY

SAILS

TRI-RADIAL RACING GENOA



Panels in-house computer designed and cut.



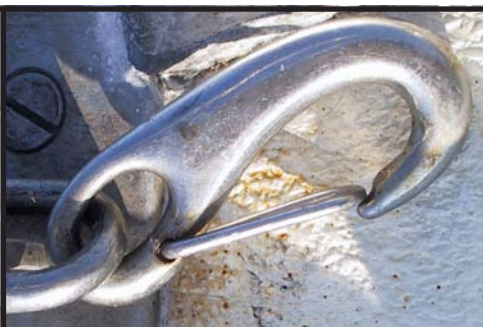
Low friction Teflon coated luff tape or brass piston hanks.



Spectra leech line with alloy cleat.



Anti-chafe 3-step stitched seams or ultra bond glued.



Wichard tack hook for easy attachment.



Full length zipped bag.

Laminate Sails with a Radial panel construction offer superior shape retention compared to any woven product. The panels are aligned radiating from the corners in the anticipated load angles, with careful fabric selection and distortion can be minimised. Westaway laminate sails are computer designed and cut, and assembled at our Ivybridge loft. Laminates are available for Cruising boats with highly durable double sided woven taffetas in Polyester, lower stretch Pentex and Ultra low stretch Carbon; Racing sails are available in a film / film option for minimum weight and highest performance in Polyester, Pentex, Kevlar and 'Grand Prix' Carbon. Single taffeta fabric is available for compromise sails where durability is required as well as racing performance. Radial sails allow lighter fabric to be used in the low load areas like the luff and heavier fabrics to be used at the high load areas like the clew and head. We may use up to 4 different fabric weights in one sail. This ensures the lightest and best performance for a given style of fabric. Cross cut laminates do not offer the long term shape retention that a radial panelled sail delivers, whilst the new style of 'membrane' sails offer excellent performance but their long term durability is poor. Cruising sails seams are traditionally sewn while 'Grand Prix' Carbon materials are 'Ultra Bond Glued' for zero seam creep.

