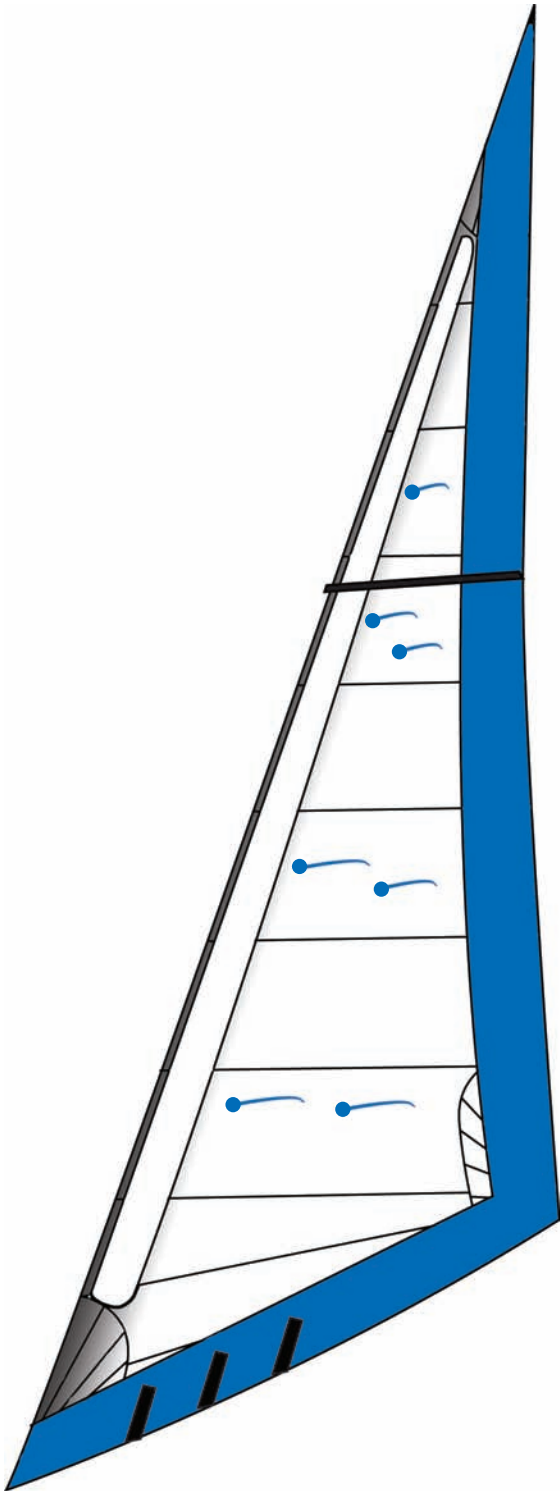




WESTAWAY

SAILS

CROSS CUT YANKEE



AVAILABLE MATERIALS



STANDARD CRUISE

DACRON

Dimension TNF



STANDARD CRUISE

DACRON

Challenge High Mod (White/
Cream/Tan)



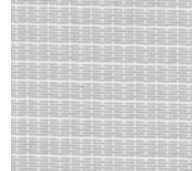
PREMIUM CRUISE DACRON

Dimension AP



**PREMIUM COLOURED
CRUISE DACRON**

Dimension AP UV Cream



BLUE WATER CRUISE

Dimension Hydra Net



WESTAWAY

SAILS

CROSS CUT YANKEE



Panels in-house computer designed and cut.



Overhead leech line with cleat near tack (as clew may be too high to reach.)



Option of lightweight UV protective strips on leech & foot.



Anti-chafe 3-step stitched seams.



Option of foam padded luff to reduce excess camber when the sail is part furled.



Option of marks on foot for easy reference when reefing.

Still the most common and suitable option for the majority of cruising boats. A cross cut sail is simple, durable and economic. Radial style woven fabric is simply not stable enough to make a long lasting radial sail, Westaway only recommend radial construction for laminate fabrics; any performance advantage a new radial Dacron sail will be soon offset by the sail shape 'ballooning' as it ages. Yankees are usually medium aspect as a result we use an all purpose yet tightly woven Dacron. This ensures that the sail will be long lasting in both durability and shape retention. Yankees are cut with a high clew and are especially efficient at tight reaching, due to the consistent sheeting angle whether running, reaching or sailing close hauled. With the clew cut high visibility is improved compared to a Genoa and water does not collect in the foot of the sail. Yankees are particularly popular with traditional craft. If the sail is to be used in conjunction with a roller reefing system a foam padded luff will help to reduce excess camber when the sail is reefed. UV protective sacrificial strips can be fitted to the leech and foot.