



WESTAWAY

SAILS

CROSS CUT ROLLER GENOA

AVAILABLE MATERIALS



STANDARD CRUISE DACRON
Dimension TNF



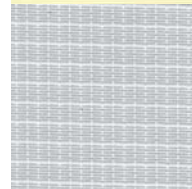
STANDARD CRUISE DACRON
Challenge High Mod (White /
Cream / Tan)



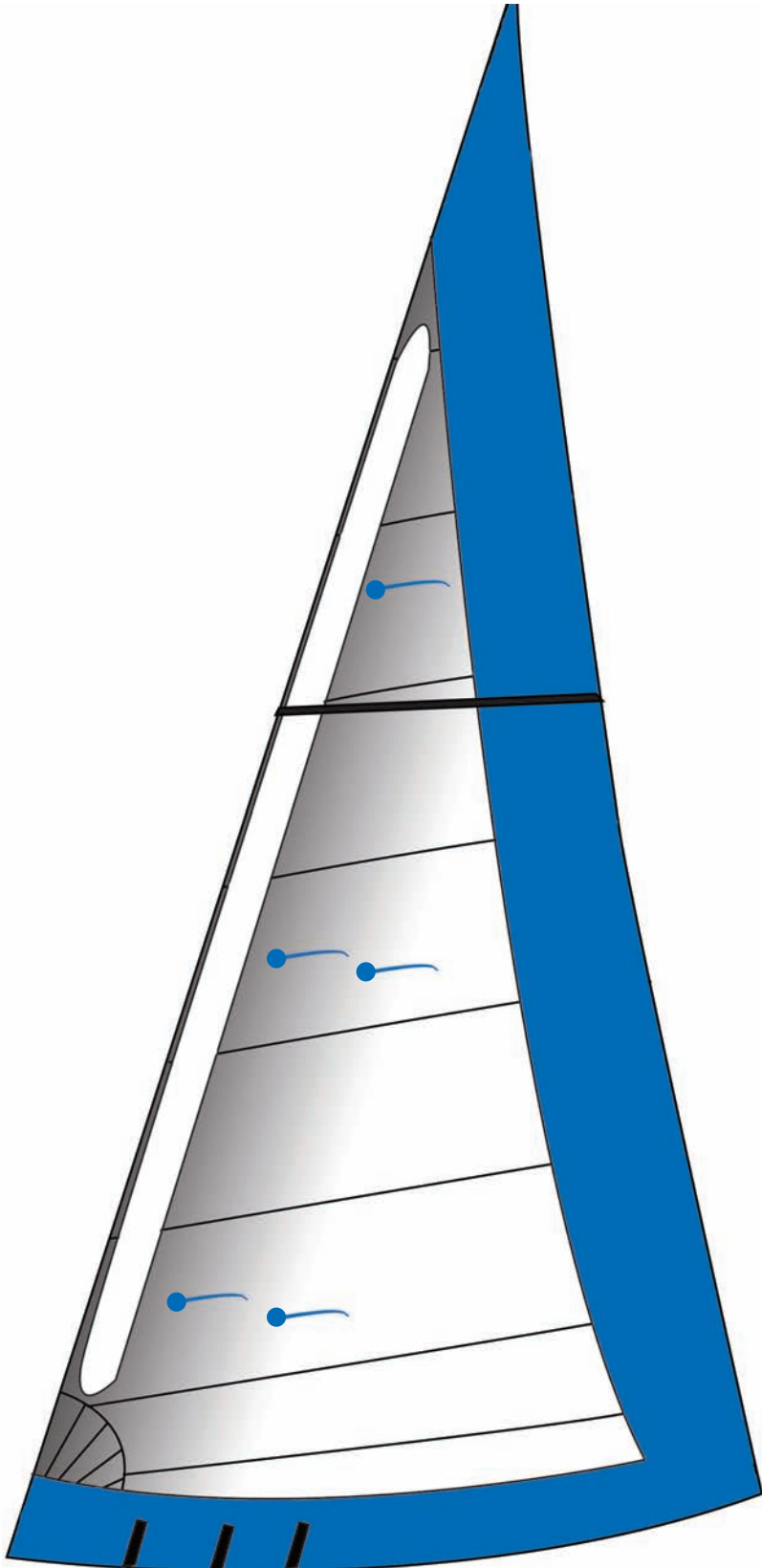
PREMIUM CRUISE DACRON
Dimension AP



**PREMIUM COLOURED CRUISE
DACRON**
Dimension AP UV Cream



BLUE WATER CRUISE
Dimension Hydra Net





WESTAWAY

SAILS

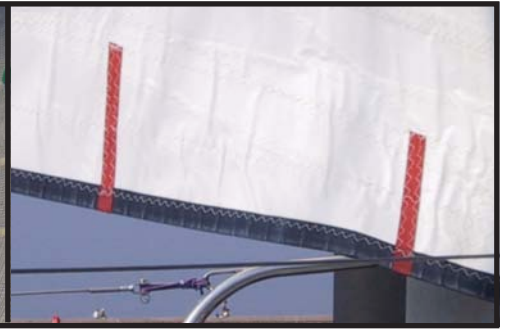
CROSS CUT ROLLER GENOA



Panels in-house computer designed and cut.



Multiple sets of telltales so when the sail is part reefed another set are visible. Optional camber stripe to help assess the sail shape.



Option of marks on the foot for easy reference when reefing.



Anti-chafe 3-step stitched seams or ultra bond glued.



Option of lightweight UV protective strips on leech & foot.



Option of foam padded luff to remove excess camber when the sail is part furled.

Still the most common and suitable option for the majority of cruising boats. A cross cut sail is simple, durable and economic. Radial style woven fabric is simply not stable enough to make a long lasting radial sail, Westaway only recommend radial construction for laminate fabrics; any performance advantage a new radial Dacron sail will be soon offset by the sail shape 'ballooning' as it ages. Overlapping Genoa's are usually low or medium aspect as a result we use an all purpose or balanced yet tightly woven Dacron. This ensures that the sail will be long lasting in both durability and shape retention. If the sail is to be used in conjunction with a roller reefing system a foam padded luff will help to reduce excess camber when the sail is reefed. UV protective sacrificial strips can be fitted to the leech and foot.