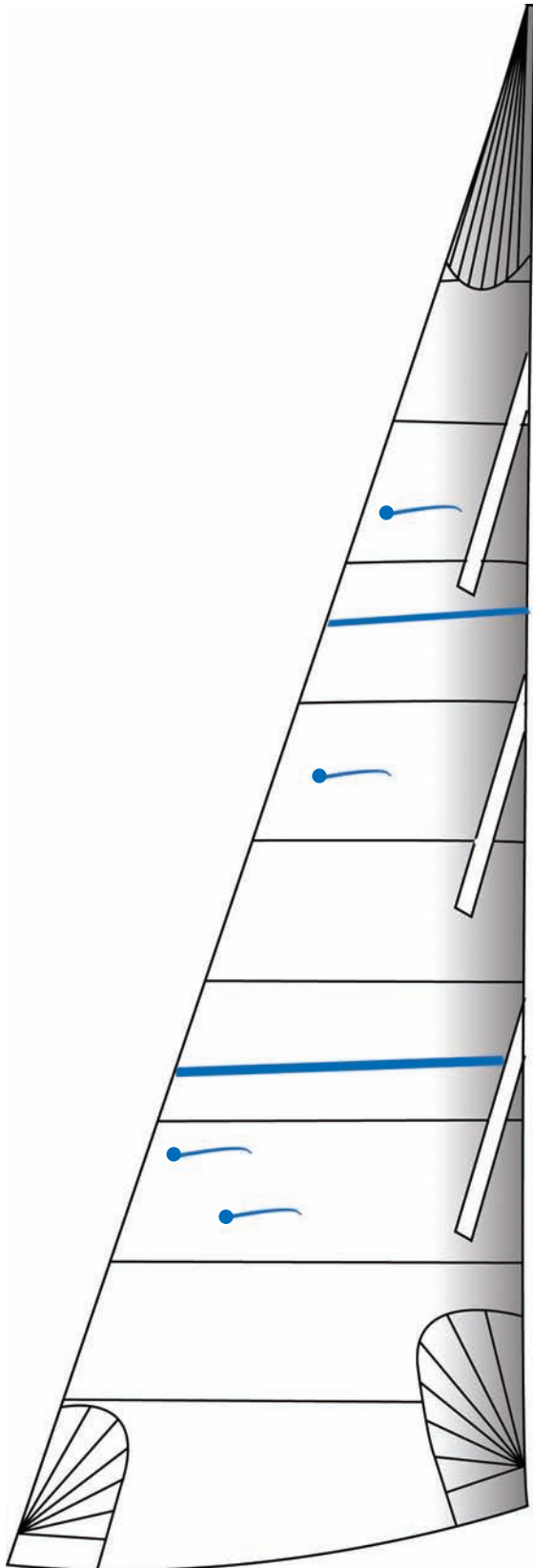




**WESTAWAY**  
SAILS

## CROSS CUT JIB WITH VERTICAL BATTENS



### AVAILABLE MATERIALS



**PREMIUM RACE DACRON**  
Dimension AP Dacron Medium or Firm Finish



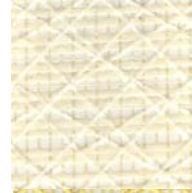
**ONE DESIGN RACE DACRON**  
Dimension SQUARE Dacron Medium or Firm Finish



**CLUB RACE DACRON**  
Contender High Aspect Dacron



**KEVLAR - HIGH PERFORMANCE RACE**  
Dimension FLXA



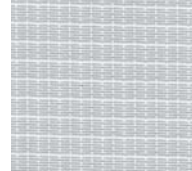
**PENTEX - CLUB RACE**  
Dimension FLXP



**KEVLAR OFFSHORE PERFORMANCE RACE**  
Dimension FLXA C/W single or double sided Polyester woven taffeta for added durability.



**PENTEX OFFSHORE PERFORMANCE RACE**  
Dimension FLXP C/W single or double sided Polyester woven taffeta for added durability.



**PBLUE WATER PERFORMANCE CRUISE**  
Dimension Hydra Net



# WESTAWAY

SAILS

## CROSS CUT JIB WITH VERTICAL BATTENS



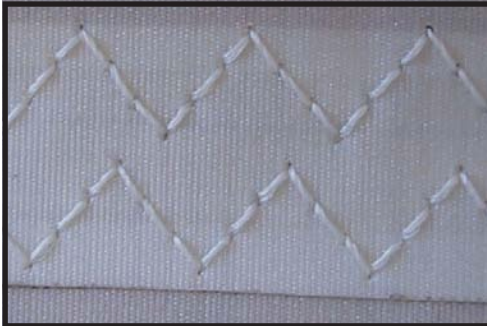
Panels in-house computer designed and cut.



Option of lightweight UV protective strips on leech & foot.



Spectra leech line with alloy cleat.



Anti-chafe 3-step stitched seams.



Tapered non-shattering & anti-twist Epoxy or Fibreglass battens.



Full length zipped bags.

Still the most common and suitable option for the majority of cruising or cruiser / racer boats. A cross cut sail is simple, durable and economic. Radial style woven fabric is simply not stable enough to make a long lasting radial sail, Westaway only recommend radial construction for laminate fabrics; any performance advantage a new radial Dacron sail will be soon offset by the sail shape 'ballooning' as it ages. Jibs and Staysails are usually high aspect as a result we use an all purpose or high aspect yet tightly woven Dacron. This ensures that the sail will be long lasting in both durability and shape retention. If the sail is to be used in conjunction with a roller reefing system vertical battens can be fitted to help support the leech, racing style sails can be fitted with battens perpendicular to the leech. UV protective sacrificial strips can be fitted to the leech and foot.

