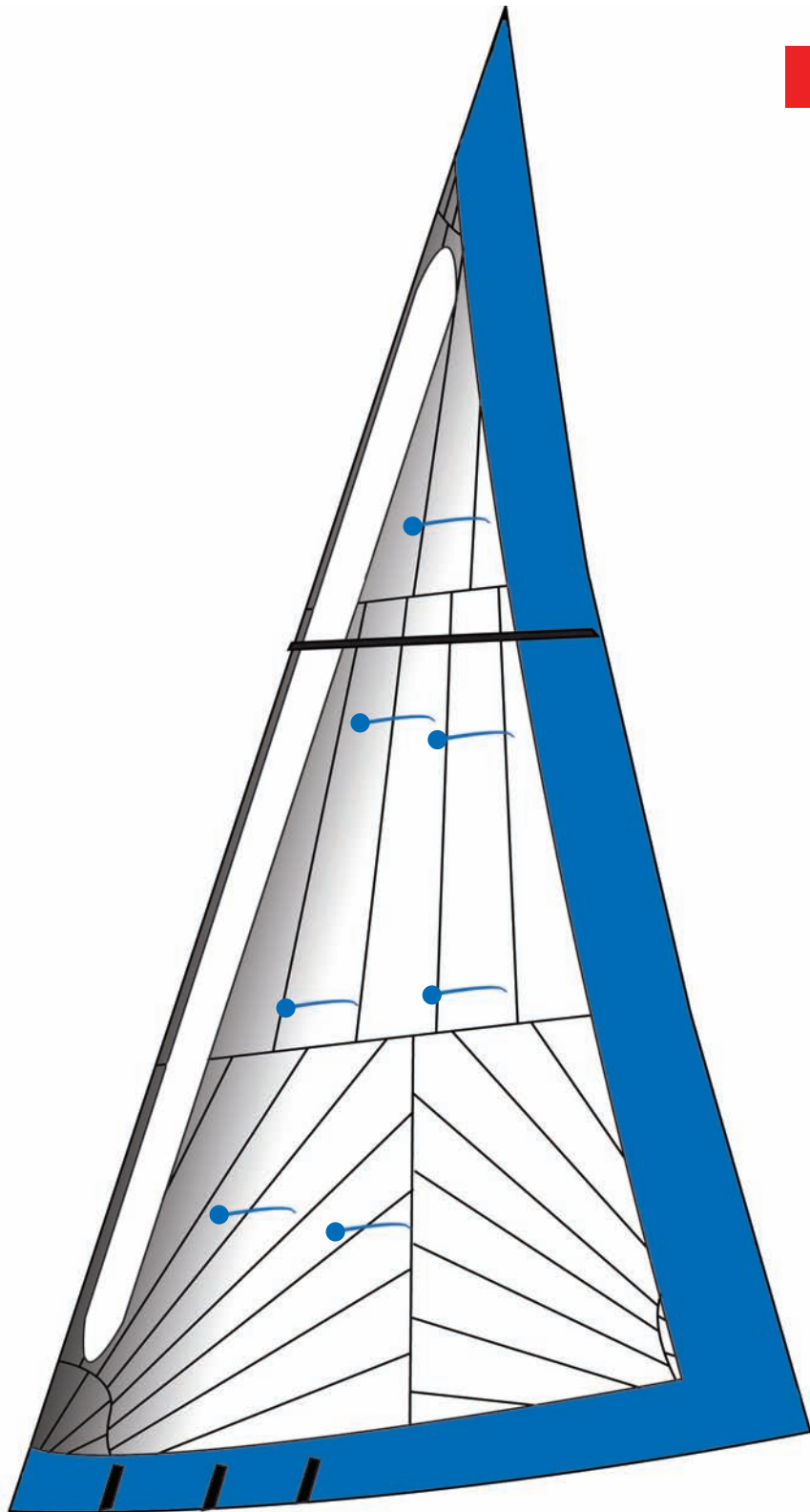




WESTAWAY

SAILS

TRI-RADIAL ROLLER GENOA



AVAILABLE MATERIALS



**POLYESTER PERFORMANCE
CRUISE**
Dimension DC



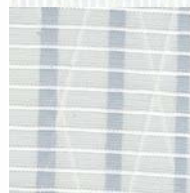
**POLYESTER PERFORMANCE
CRUISE**
Bainbridge CL



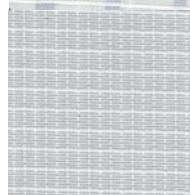
**PENTEX HIGH PERFORMANCE
CRUISE**
Dimension DCP



**PENTEX HIGH PERFORMANCE
CRUISE**
Bainbridge CL LSP



**CARBON ULTRA HIGH
PERFORMANCE CRUISE**
Dimension CXG



BLUE WATER CRUISE
Dimension Hydra Net



WESTAWAY

SAILS

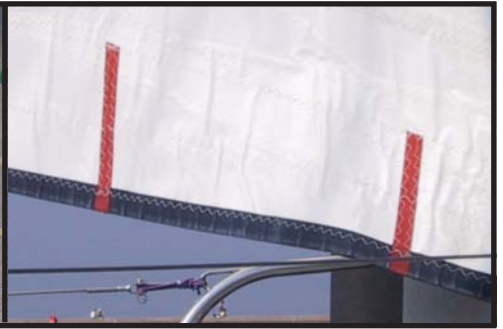
TRI-RADIAL ROLLER GENOA



Panels in-house computer designed and cut.



Multiple sets of telltales so when the sail is part reefed another set are visible. Optional camber stripe to help assess the sail shape.



Option of marks on the foot for easy reference when reefing.



Anti-chafe 3-step stitched seams or ultra bond glued.



Option of lightweight UV protective strips on leech & foot.



Option of foam padded luff to remove excess camber when the sail is part furled.

Laminate Sails with a Radial panel construction offer superior shape retention compared to any woven product. The panels are aligned radiating from the corners in the anticipated load angles, with careful fabric selection and weight sail distortion can be minimised. Laminates are available for Cruising boats with highly durable double sided woven taffetas in Polyester, lower stretch Pentex and Ultra low stretch Carbon. Radial sails allow lighter fabric to be used in the low load areas like the luff and heavier fabrics to be used at the high load areas like the clew and head. We may use up to different fabric weights in one sail. This ensures the lightest and best performance for a given style of fabric. Cross cut laminates do not offer the long term shape retention that a radial panelled sail delivers, whilst the new style of 'membrane' sails offer excellent performance but their long term durability is poor. If the sail is to be used in conjunction with a roller reefing system a foam padded luff will help to reduce excess camber when the sail is reefed. UV protective sacrificial strips can be fitted to the leech and foot.

