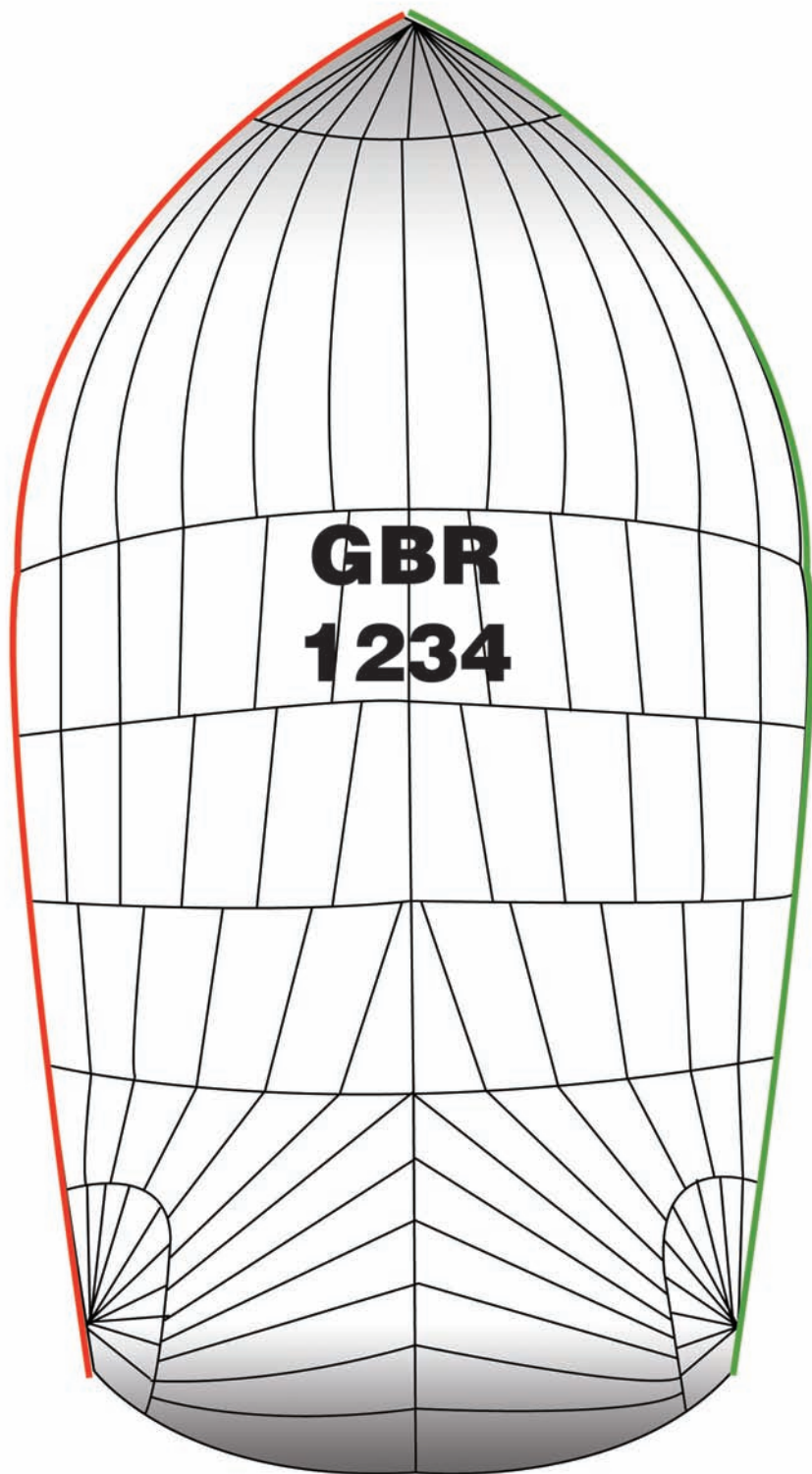




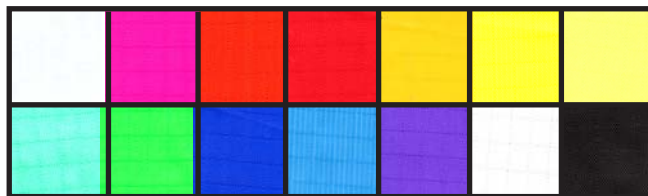
WESTAWAY

SAILS

SYMMETRICAL RACING SPINNAKER



AVAILABLE MATERIALS



CONTENDER SUPERKOTE
0.60Z/0.750Z/0.90Z &
CONTENDER SUPERLIGHT
0.50Z

Natural, New Pink, Orange, Red, Gold,
Yellow, Fluoro Yellow, Green, Fluoro Green,
Dark Blue, Light Blue, Lilac, Grey, Black.



WESTAWAY

SAILS

SYMMETRICAL RACING SPINNAKER



Panels in-house
computer designed.



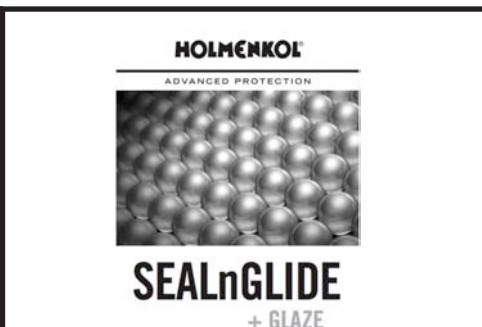
Option of corporate or personal
image painted onto sail.



Generous side
launch bag.



Generous
hooped bag.



Option of "Seal 'n' Glide" coating to eliminate
water penetration & allow easier flying.



Coloured leech
and luff tapes.

Our spinnakers are constructed with a full radial construction. Not only do the panels radiate out of the 3 corners like on a standard tri-radial sail, the centre sections have vertical panels that are 'rocked' to continue the continuous smooth trajectory curve from head to clew / tack. This panel layout allows the thread lines or the fabric to be aligned with the loads imposed on the sail, thus reducing stretch and improves performance and durability. With improved computer designing, nesting and cutting there is little difference in cloth and assembly efficiency allowing full radial sails at tri-radial prices! Heavier fabric can be used in higher load areas like head and tack for improved durability and efficiency for larger sails. Our spinnakers are designed to suit the customers' requirements, usually to be easy to trim and stable however more specific requirements can be accommodated. All spinnakers are custom designed and cut, a personalized colour combination is available. Fabric weight and exact shape depends on size of boat. Westaway Sails offer personalized images to be painted onto the sail. Price is dependent on the size and complexity of the image.

